

The ECS16 series are split-core current transformers. The CT can be mounted to existing panels, such as control centers or load centers, to measure or monitor wattage. These CTs can be mounted without removing existing cables for easier installation

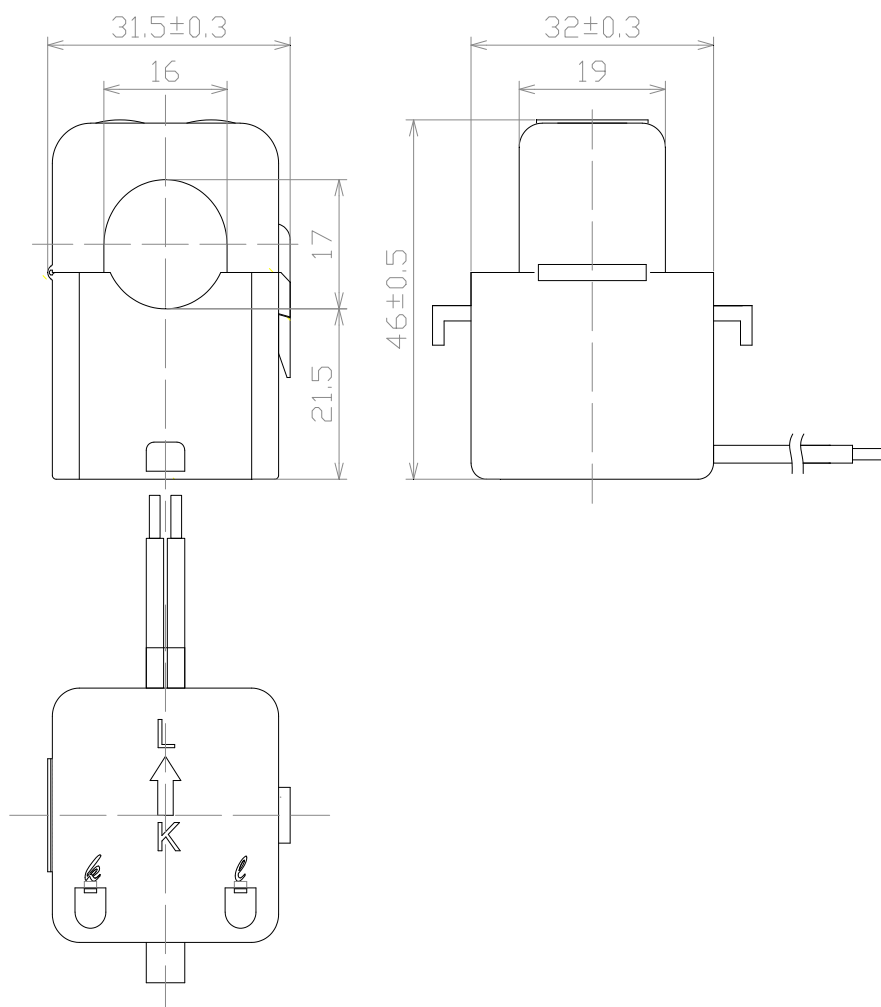


Electrical Specifications

MODEL	INPUT CURRENT	AVAILABLE OUTPUT
ECS16-50	50 A	CURRENT OUTPUTS @ 20mA, 33.3mA, 40mA, 50mA, 100mA, 1A VOLTAGE OUTPUTS @ 0.25V, 0.333V, 0.5V, 1V, 2V (can be customized by customer)
ECS16-80	80 A	
ECS16-100	100 A	
ECS16-120	120 A	
ECS16-150	150 A	



Mechanical Dimensions in mm



APPLICATIONS

- Energy and sub-metering products
- Electrical load monitoring
- Network equipment
- Instruments and sensors
- Control systems
- Go GREEN initiatives

FEATURES

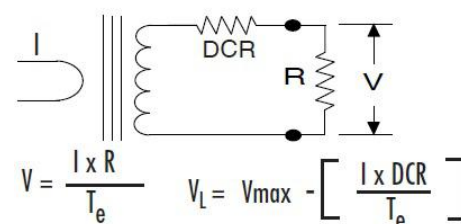
- 0.63" window opening (ID)
- Custom design Turns-Ratio available
- Rigid housing case with UL 94V-0 durable plastic

- PVC wire leads—24~18AWG
- Approximate weight 100g

SPECIFICATIONS

- Standard Input Current 0.1-150A
- Frequency 50Hz — 400Hz
- Standard accuracy 0.5, 1, 3
- Insulation Voltage 2500 Vac/1min
- Operating Temp. -40°C to +65°C
- Storage Temp. -45°C to +85 °C
- ANSI C57.13 and IEC61869-1 Standards

Connection Diagram



CAUTION

Before installation, safety precautions must be followed by licensed professional. Never energize primary unless short circuited terminals or burden connected to secondary.