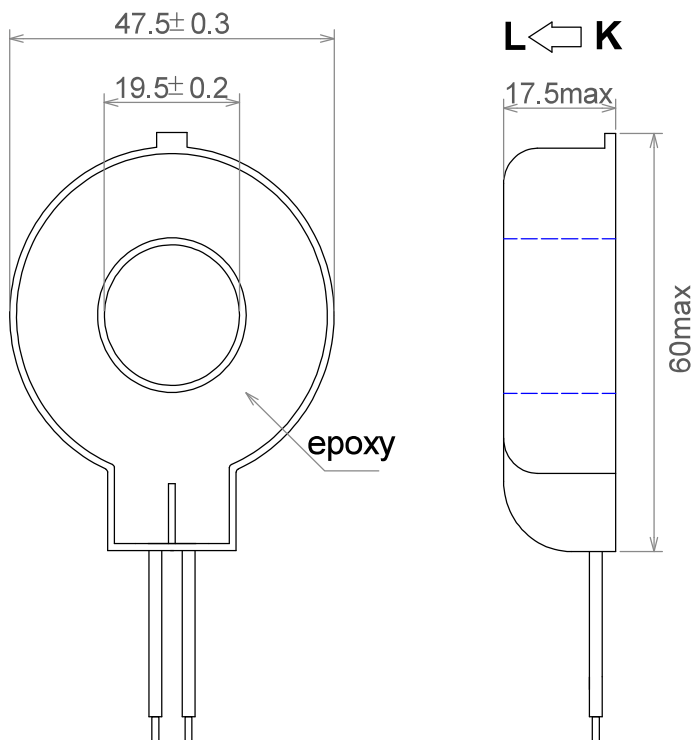


The ECO20 series are mini-precision current transformers.
The CT is Small size and low cost

Electrical Specifications

MODEL	INPUT CURRENT	AVAILABLE OUTPUT
ECO20-50	50A	CURRENT OUTPUTS @ 20mA, 30mA, 40mA , 50mA, 100mA
ECO20-100	100 A	
ECO20-150	150 A	
ECO20-200	200 A	

Mechanical Dimensions in mm



APPLICATIONS

- Energy and sub-metering products
- Electrical load monitoring
- Network equipment
- Instruments and sensors
- Control systems
- Go GREEN initiatives

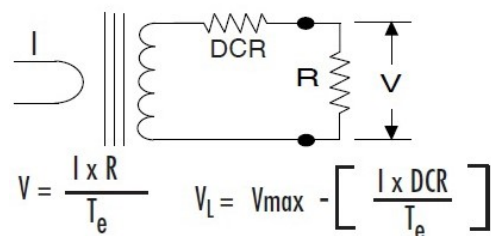
FEATURES

- 0.768" window opening (ID)
- Custom design Turns-Ratio available
- Rigid housing case with UL 94V-0 durable plastic
- 6ft black/white PVC wire leads—26~18AWG
- Approximate weight 80g

SPECIFICATIONS

- Standard Input Current 0.1-200A
- Frequency 50Hz — 400Hz
- Standard accuracy 0.2, 0.5, 1
- Insulation Voltage 4000 Vac/1min
- Operating Temp. -40°C to +70°C
- Storage Temp. -45°C to +85 °C
- ANSI C57.13 and IEC60044-1 Standards

Connection Diagram



CAUTION

Before installation, safety precautions must be followed by licensed professional. Never energize primary unless short circuited terminals or burden connected to secondary.