

The ECS90-S series are split-core current transformers. The CT can be mounted to existing panels, such as control centers or load centers, to measure or monitor wattage. These CTs can be mounted without removing existing cables for easier installation.



### Electrical Specifications

MODEL	INPUT CURRENT	AVAILABLE OUTPUT
ECS90-500S	500 A	CURRENT OUTPUTS @ 20mA, 40mA, 50mA, 100mA, 1A, 5A VOLTAGE OUTPUTS @ 0.25V, 0.333V, 0.5V, 1V, 2V (can be customized by customer)
ECS90-600S	600 A	
ECS90-800S	800 A	
ECS90-1000S	1000 A	
ECS90-1200S	1200A	



### APPLICATIONS

- Energy and sub-metering products
- Electrical load monitoring
- Network equipment
- Instruments and sensors
- Control systems
- Go GREEN initiatives

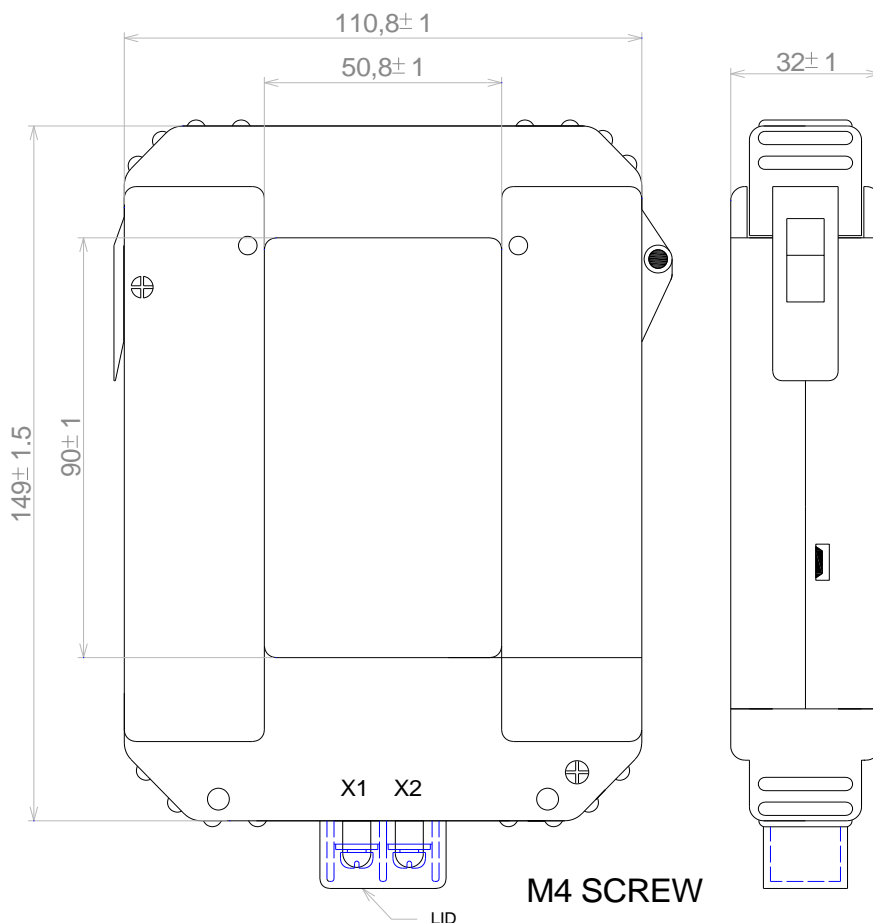
### FEATURES

- 2.00\*3.54" window opening (ID)
- Custom design Turns-Ratio available
- Rigid housing case with UL 94V-0 durable plastic
- M4 terminal output
- Approximate weight 700g

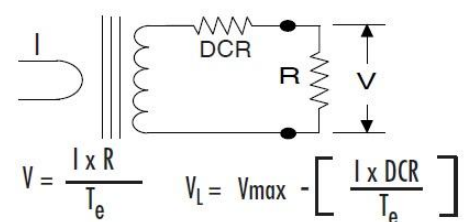
### SPECIFICATIONS

- Standard Input Current 5-1500A
- Frequency 50Hz — 400Hz
- Standard accuracy 0.5, 1
- Insulation Voltage 4000 Vac/1min
- Operating Temp. -40°C to +30°C
- Storage Temp. -45°C to +85 °C
- ANSI C57.13 and IEC61869-2 Standards

### Mechanical Dimensions in mm



### Connection Diagram



### CAUTION

Before installation, safety precautions must be followed by licensed professional. Never energize



## AC Split Core Current Transformer Type ECS90-S Series

primary unless short circuited terminals or burden connected to secondary.

---