

The ECS25 series are split-core current transformers. The CT can be mounted to existing panels, such as control centers or load centers, to measure or monitor wattage. These CTs can be mounted without removing existing cables for easier installation



Electrical Specifications

MODEL	INPUT CURRENT	AVAILABLE OUTPUT
ECS25-50	50 A	CURRENT OUTPUTS @ 20mA, 33.3mA, 40mA, 50mA,100mA VOLTAGE OUTPUTS @ 0.25V, 0.333V, 0.5V, 1V, 2V (can be customized by customer)
ECS25-100	100 A	
ECS25-150	150 A	
ECS25-200	200 A	
ECS25-250	250 A	
ECS25-300	300 A	
ECS25-400	400 A	



APPLICATIONS

- Energy and sub-metering products
- Electrical load monitoring
- Network equipment
- Instruments and sensors
- Control systems
- Go GREEN initiatives

FEATURES

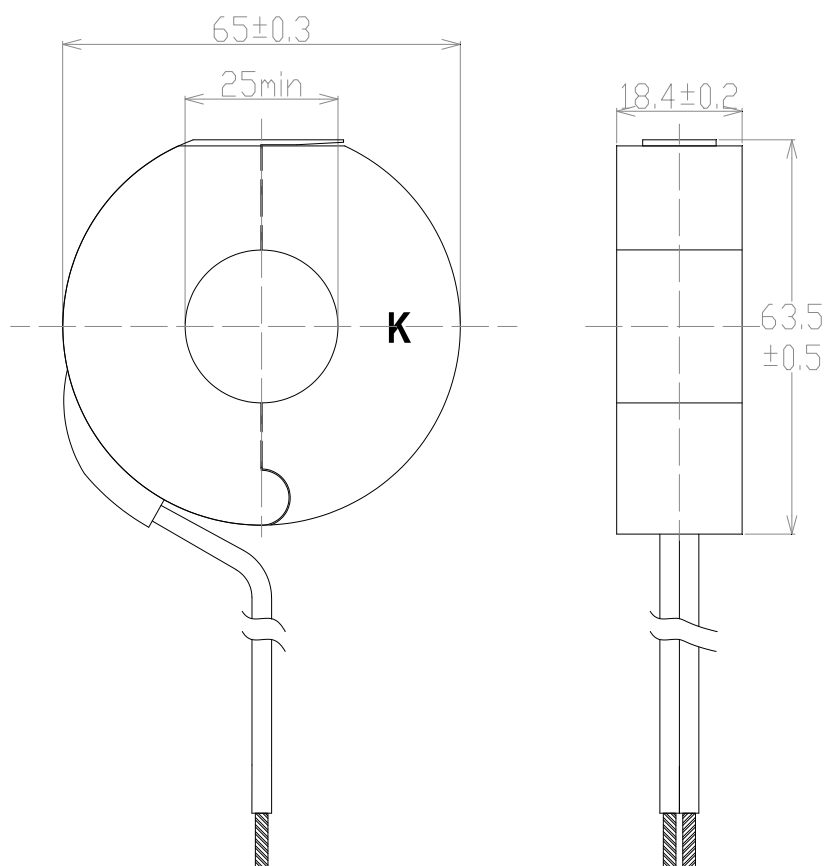
- 0.94" window opening (ID)
- Custom design Turns-Ratio available
- Rigid housing case with UL 94V-0 durable plastic
- PVC wire leads—22~18AWG
- Approximate weight 180g

SPECIFICATIONS

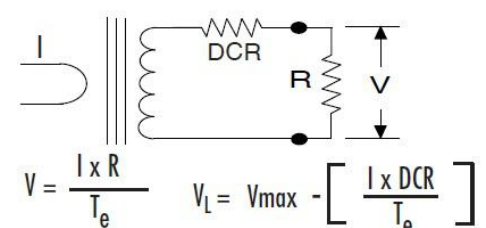
- Standard Input Current 5-400A
- Frequency 50Hz — 400Hz
- Standard accuracy 0.5,1
- Insulation Voltage 4000 Vac/1min
- Operating Temp. -40°C to +60°C
- Storage Temp. -45°C to +85 °C
- ANSI C57.13 and IEC61869-2

Standards

Mechanical Dimensions in mm



Connection Diagram



CAUTION

Before installation, safety precautions must be followed by licensed professional. Never energize primary unless short circuited terminals or burden connected to secondary.